

ELIXIR-DE / de.NBI Cloud as a National Data Infrastructure for Health Data

Alexander Sczyrba

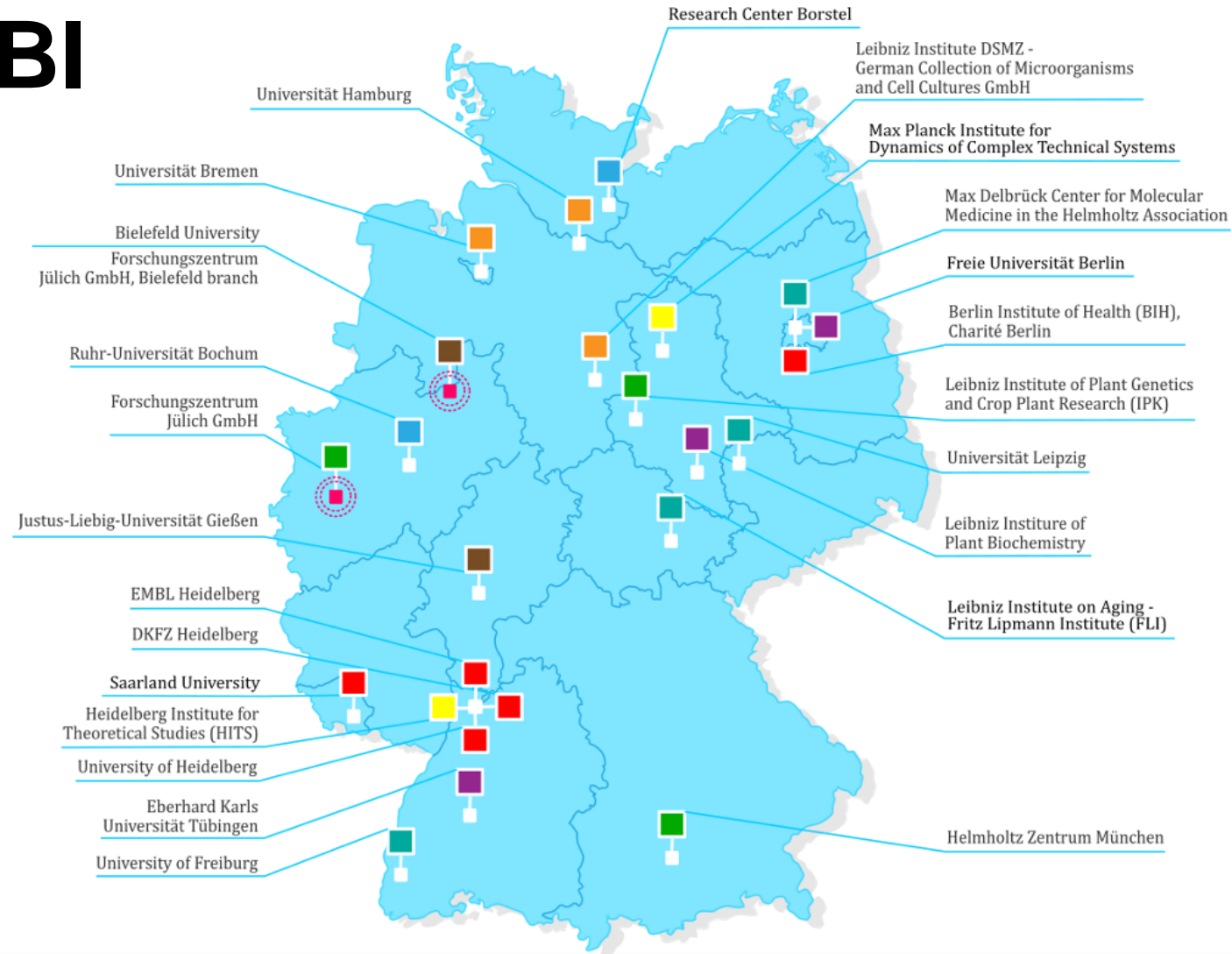
Forschungszentrum Jülich



German Network for Bioinformatics Infrastructure – de.NBI

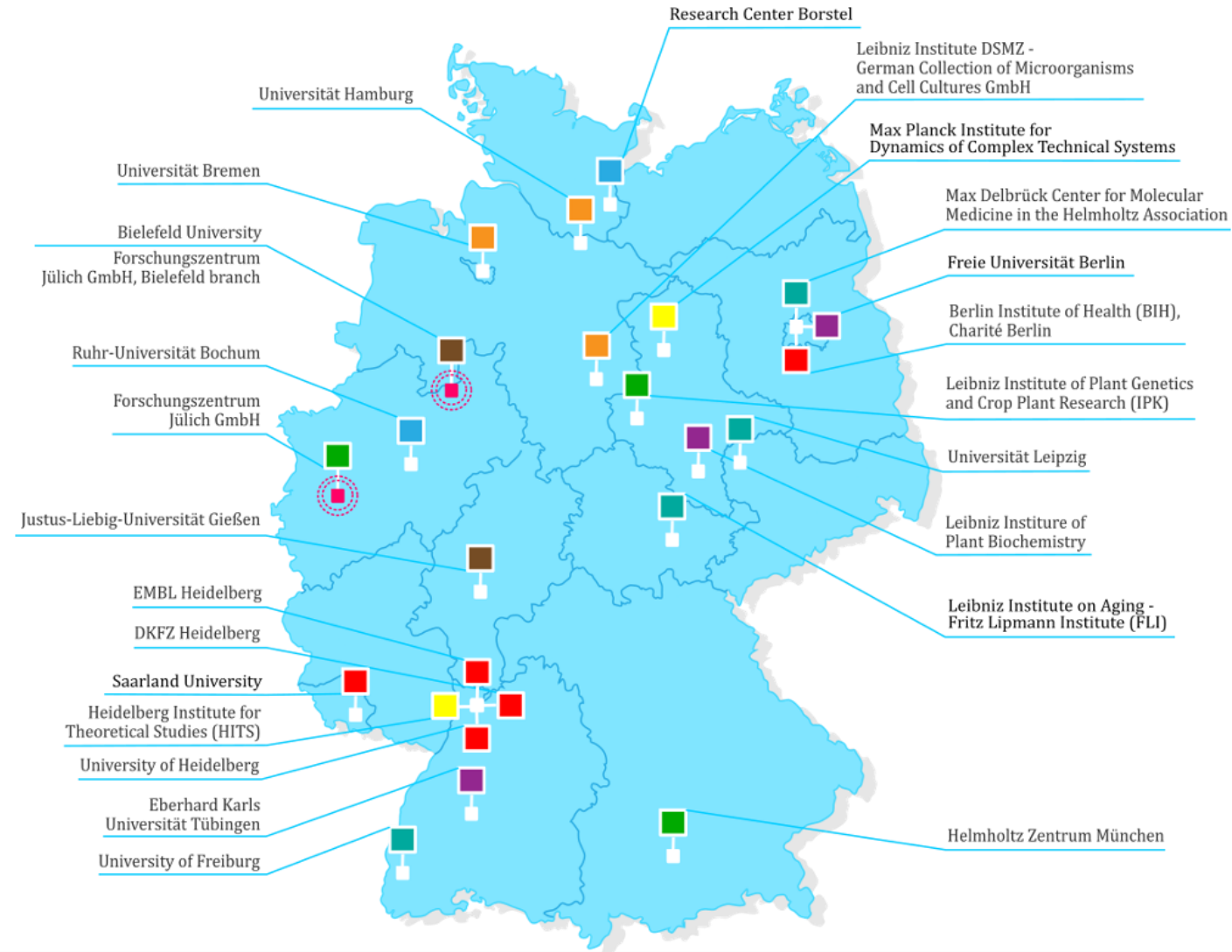
- 24 partners
- 8 service centers
- funded by BMFTR, federal states and partner institutions
- scientific expertise in a wide range of bioinformatics topics:

- Human Bioinformatics
- Microbial Bioinformatics
- Plant Bioinformatics
- RNA Bioinformatics
- Bioinformatics for Proteomics
- Integrative Bioinformatics
- Reference Databases
- Data Management and Systems Biology



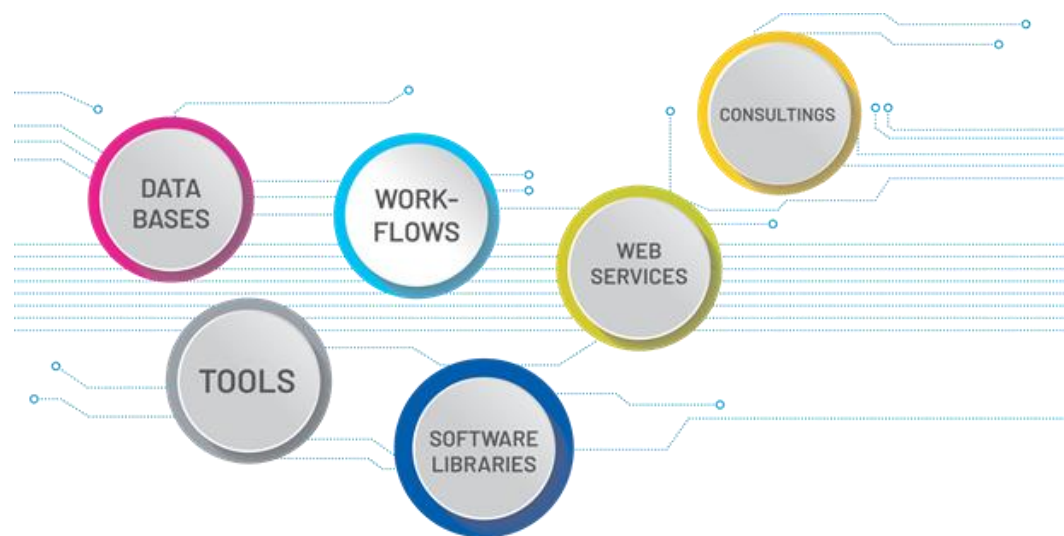
de.NBI Mission

- Provision of comprehensive first-class **bioinformatics tools & services** to users in basic and applied life sciences research
- Bioinformatics **training** in Germany and Europe through a wide range of workshops and courses
- Providing **cloud computing** resources for academia in Germany
- Transfer of expertise between academia and industry in our **Industrial Forum**
- **Cooperation** of the German bioinformatics community with **international bioinformatics networks**



de.NBI Services for Life Scientists

de.NBI offers > **160 bioinformatics tools and services** for the analysis and evaluation of biological data sets

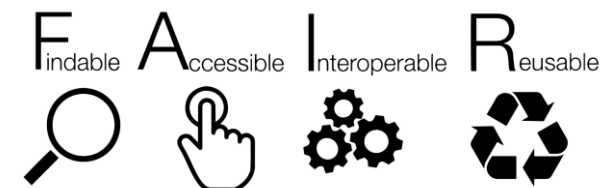


The majority referenced, searchable and findable in the ELIXIR **bio.tools** registry

<https://bio.tools>




de.NBI Services are committed to FAIR data principles




<https://www.denbi.de/services>

de.NBI Training for Life Scientists

 The de.NBI network provides a **state-of-the-art training program** addressing a multitude of topics

 Life scientists learn how to **handle and analyze biological big data** more effectively by applying tools, standards, and compute services

 de.NBI has evolved to be a **leading contact point for bioinformatics training** in Germany and Europe and guarantees high quality standards

Ø 40-80 de.NBI courses per year

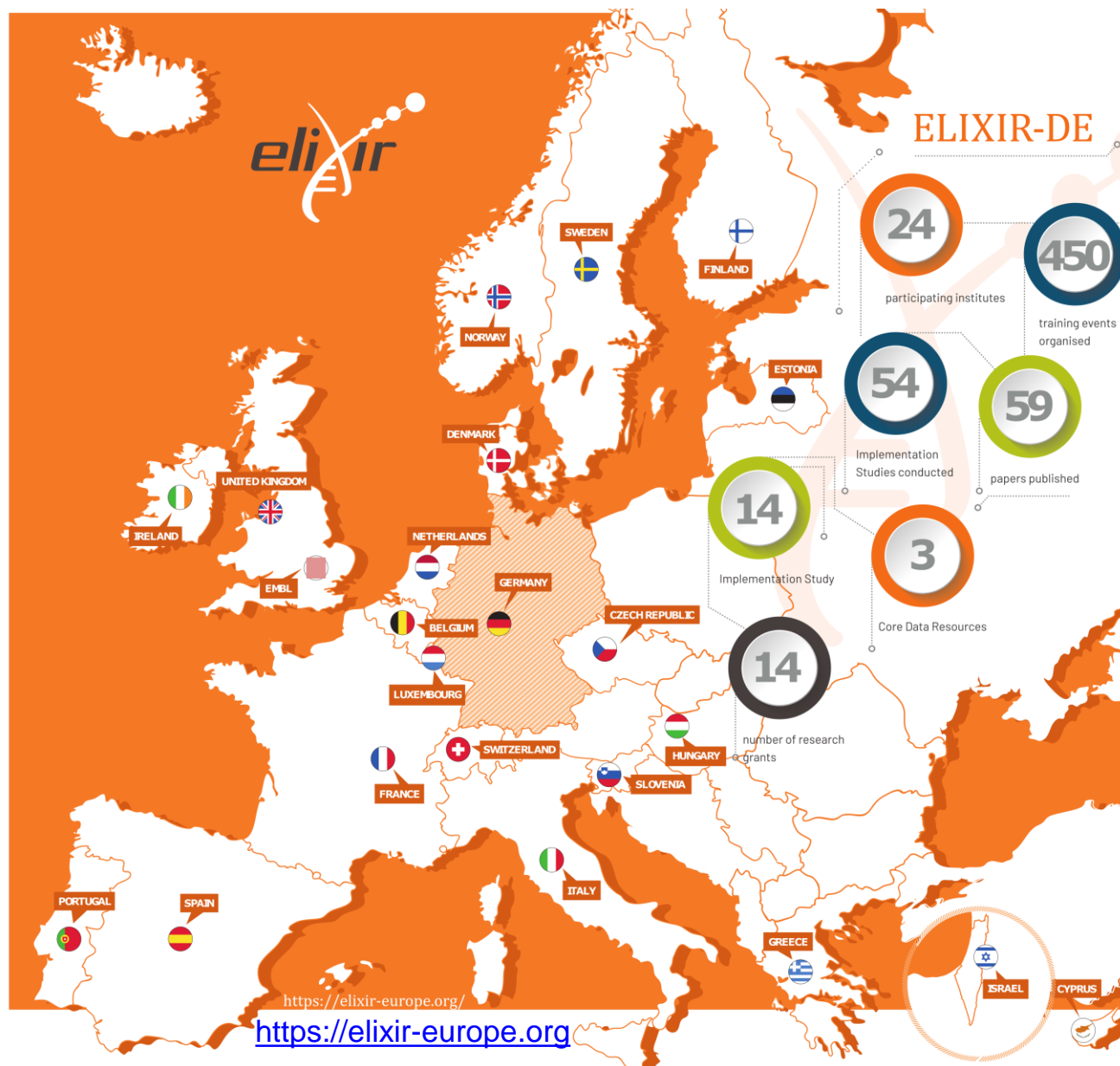
Upcoming events:

- Summer School on Cheminformatics
- Cloud meets RDM
- Machine learning for genomics
- Lipidomics and Bioinformatics
- Computational Pangenomics
- Galaxy training programmes
- Developer meetings
- BioHackathons

<https://www.denbi.de/training>



The German Node within ELIXIR Europe



ELIXIR-DE

- **ELIXIR** is an intergovernmental organization and brings together life science resources from across Europe
- The ELIXIR consortium consists of **21** member states + EMBL
- **ELIXIR Germany** is the national Node of the European ELIXIR infrastructure since 2016
- The node is run by members of the German Network for Bioinformatics Infrastructure (**de.NBI**)

24

Participating
German institutes

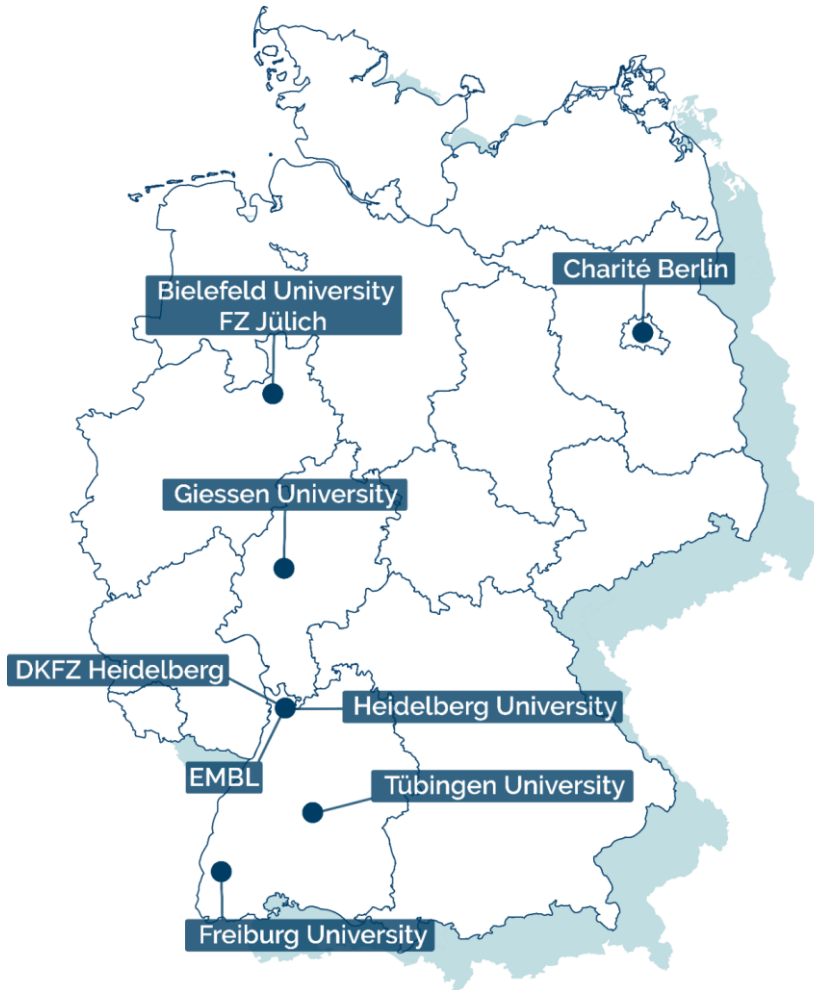
139

Tools & Services

26

Training Courses
in 2025 so far

de.NBI Cloud – Cloud Computing for Life Sciences



Federated Sites - Shared Responsibility

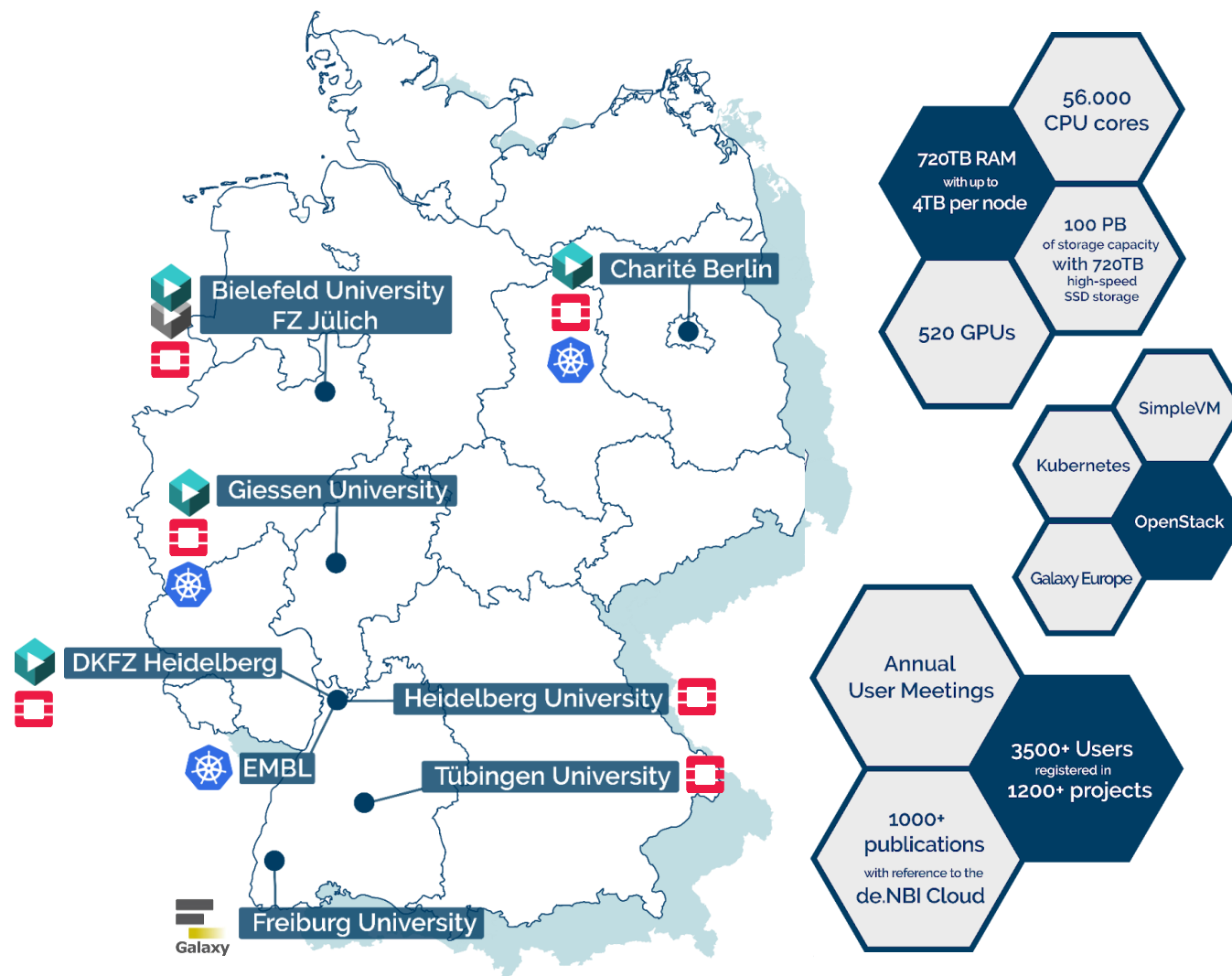
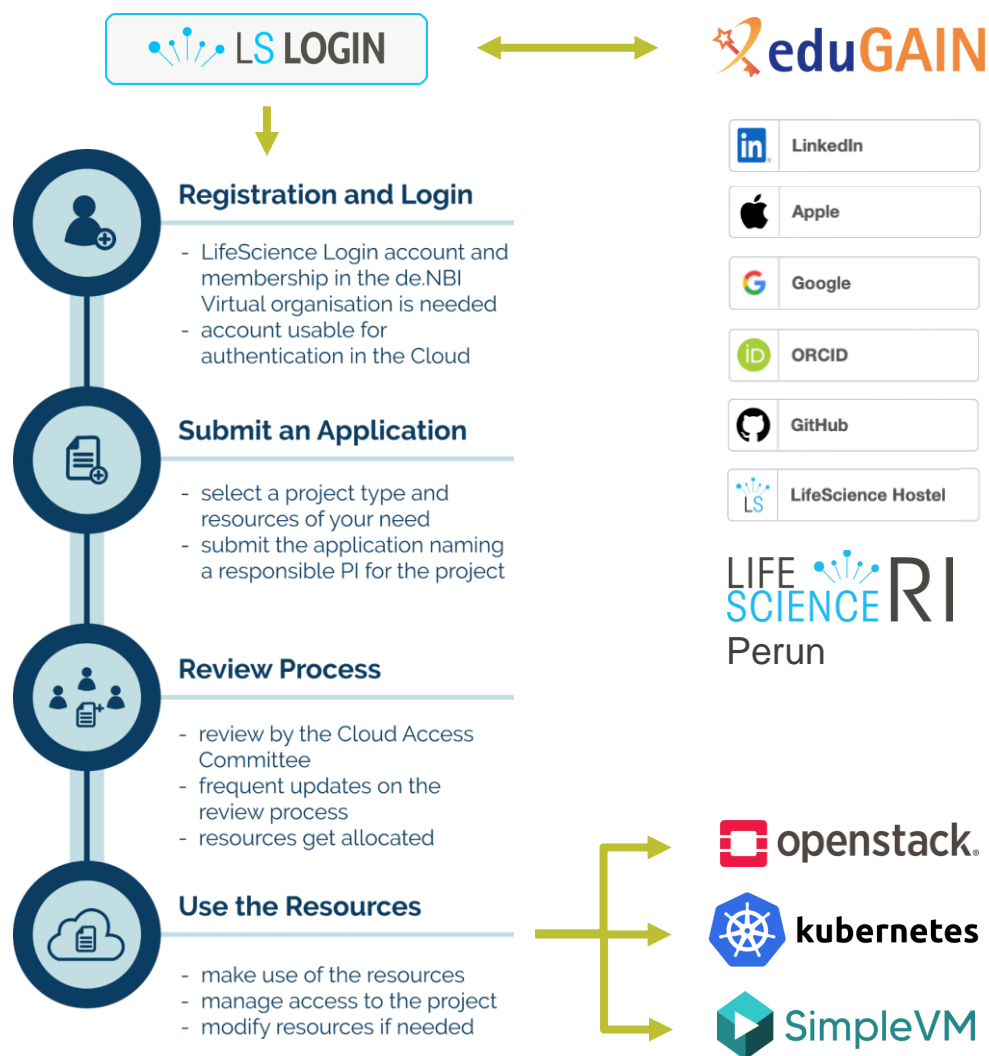
Independent Legal Entities operate each data center

- ▶ Cooperation based on de.NBI / ELIXIR-DE cooperation agreement
- ▶ Shared technical and legal requirements for operation of a de.NBI Cloud location
- ▶ Common (cloud portal) and local (individual cloud sites) responsibility for IT / service security and data protection
- ▶ Data processing agreements between users and cloud site for sensitive data processing

Centrally organized by de.NBI Cloud Portal at Forschungszentrum Jülich, Outstation Bielefeld

- ▶ Project resource applications and modifications
- ▶ Project assignment to cloud sites based on requirements
- ▶ Central user helpdesk - 1st and 2nd level support
- ▶ Quarterly strategic meeting of de.NBI Cloud Working Group
- ▶ Monthly technical and certification coordination meetings
- ▶ Multiple ISMS and IT security trainings annually
- ▶ Mutual internal audits of ISMS state and adoption at each cloud site
- ▶ Primary and secondary means of communication and disaster response
- ▶ Directory of procedures for each participating cloud site + portal

A Core de.NBI Service: The Federated de.NBI Cloud



Project Type Selection

Infrastructure-, Platform- and Workflows-as-a-Service



- ▶ High configurability, infrastructure virtualization
- ▶ API access, e.g. for use with Terraform or Ansible
- ▶ Any software of the cloud ecosystem



- ▶ High configurability, service and container orchestration
- ▶ API access, e.g. for use with kubectl
- ▶ Any containerized software / service, Helm charts



- ▶ Beginner-friendly, preconfigured Research Environments
- ▶ ELIXIR guarded interactive browser sessions
- ▶ “One-click” solution for setting up your own cluster



- ▶ Fully established bioinformatics tools and workflows, maintained by the community
- ▶ Point-and-click GUI for composition of bioinformatics workflows
- ▶ Interactive tours and comprehensive training library

SimpleVM - Simple Access to Virtual Machines

Self Service VMs and Research Environments



- Beginner-friendly, preconfigured & custom research environments
- Integrated with LifeScience AAI for authentication and authorization
- Easy VM, volume and user management
- Browser and SSH access

IDEs



Visual Studio Code

Data Science Notebooks



Remote Desktop



Canonical

Ubuntu + XFCE



Custom VREs



Community
Curated



HashiCorp

Packer

SimpleVM Portal - Create Instance - Flavor Selection

SimpleVM

HELP

Help

PROFILE

User

PROJECTS

testVksorM

CBKIC - Test

testVMMap

GreenTest

GreenTestAdmin

JohnGonsoudu

testTerraPpus_2

WORKSHOPS

testB

testWorkshopGus

cryptogpt

INSTANCE MANAGEMENT

Create new instance

Instances

Create new clusters

Clusters

Create Instance

W

Please select a project

testVksorM

Vms

Ram [GiB]

Cores

Number of Volumes

Volumes Storage [GiB]

GPUs

3 | 519

10 | 98488

5 | 10918

2 | 10

2 | 200

0 | 12

Flavor

Image

Research Environments

Name of your instance

armedjunglefowl

✓

Flavor

Standard Flavor 9

High Memory Flavor 3

Graphic Processing Unit Flavor 5

Filter flavors by name

Please consider: You only are able to start as many **Standard Flavors** as are approved for the project. If approved flavors are not displayed here, you have already exhausted the resources for the corresponding flavor, or the flavor would exceed the general available resources of your project. Learn more [here](#).

If (more) resources of this type are needed, consider requesting adjustments to the project resources.

de.NBI tiny

- VCPUs: 1
- RAM: 2 GiB
- Root disk: 50 GiB

Select flavor

de.NBI default

- VCPUs: 2
- RAM: 4 GiB
- Root disk: 50 GiB

Select flavor

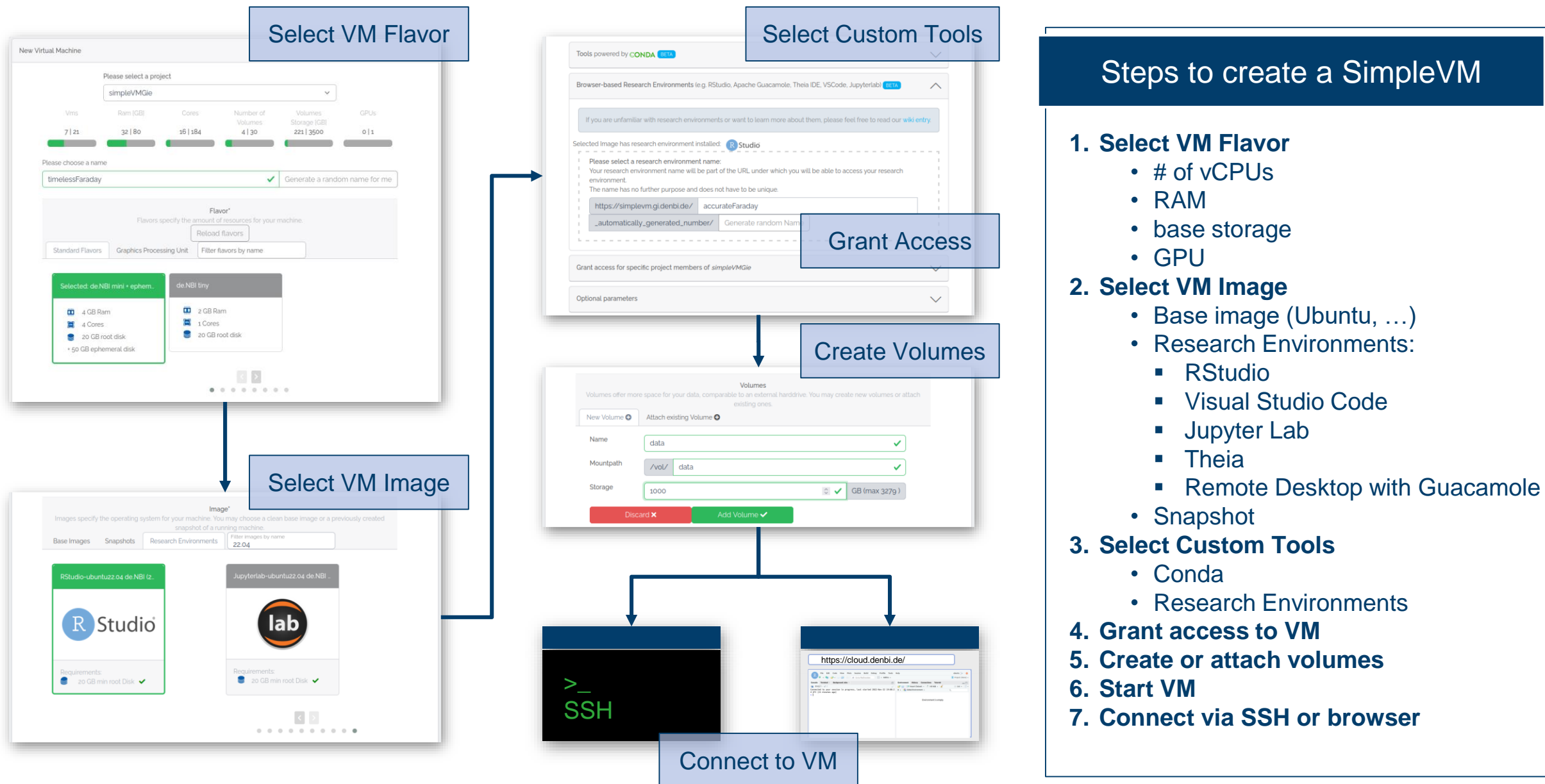
de.NBI mini

- VCPUs: 4
- RAM: 7.91 GiB
- Root disk: 50 GiB

Select flavor

Show more

SimpleVM - Simplified Access to Virtual Machines



SimpleVM - VM Management

Select VM

Own Machines All Machines
Machines of your facilities

First Previous 1 2 3 4 5 Next Last
1 VMs per page

☐ Cluster ☐ Set for termination ☒ ACTIVE ☒ SHUTOFF ☐ DELETED Actions

user:project:elxir_id:openstackid:name Filter

Instance Name	Project	Created (by/at)	
accurateFaraday-c84ba	simpleVMGie	nils.hofmann 2023-06-07	

deNBI mini 4 VCPUs - 8 GB RAM - 20 GB root disk
Image: jupyterlab-ubuntu22.04 deNBI (2023-05-10)

Show VM details/logs How to connect... Show actions...

Flavor Information

Name deNBI mini	Number of VCPUs 4	RAM 8 GB
Rootdisk 20 GB	Ephemeral disk 0 GB	

Image Information

	Name Jupyterlab-ubuntu22.04 deNBI (2023-05-10)
Description Jupyterlab	

Manage Lifecycle

accurateFaraday-c84ba Status: ACTIVE

Created at (id-m-y): 2023-06-07 Created by: nils.hofmann Elxir-ID of nils.hofmann: 789a1955b39b21df66732754c99fcb2cde0ab2@elxir-europe.org

Part of: simpleVMGie Openstack-ID: cob#711-6e9a-4107-bc8a-412e1177d795

Connect Information

via SSH with Please use the following command to access your virtual machine:
ssh -i /path/to/your/ssh /private/key ubuntu@134.176.27.78 -p 30154 Copy Command

Learn more about persistent terminal sessions when using ssh: [Tutorial](#)

via Jupyterlab with https://simplevm.gi.denbi.de/fastNewtonY_100/
Login Token: simplevm Copy Command

Actions

Stop VM Reboot VM Create Snapshot Delete VM

Manage Volumes

Attached Volumes

Name jupyterdata	Status in-use	Storage 50 GB
Volume ID 39c0205a-c840-4760-bcfd-baa4511453b5	Initially attached to /vol/data	Device /dev/vdb
Actions	Detach Volume	

- ## Managing a SimpleVM
1. Select VM
 2. Manage VM Lifecycle
 - Stop
 - Start
 - Reboot
 - Snapshot
 - Delete
 3. Manage Volumes
 - Detach
 - Attach
 4. Manage Access to VM

Manage Access

Research Environment

Name: Jupyterlab Description: Jupyterlab

URL: https://simplevm.gi.denbi.de/fastNewtonY_100

User management

+ Add User Reload User list

Managing Users is a new feature, which will only work if you created your research environment after 22.05.2020. If you created your research environment before the 22.05.2020, these features will not work. To get it working, you may create a snapshot of your virtual machine and start a new virtual machine with the respective snapshot and research environment!

User ID	Member ID	Full Name	Actions
---------	-----------	-----------	---------

Ansible/Conda/Research-environment logs

Download PDF Logs Download txt Logs

SimpleVM Features: Workshop & Cluster Module



Workshop

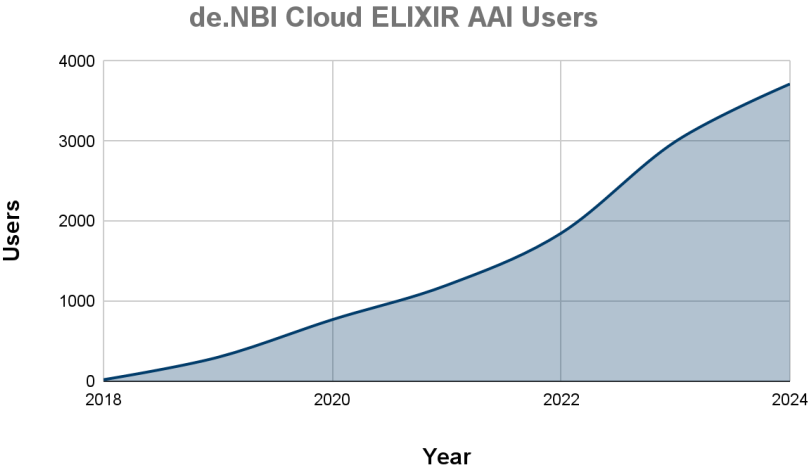
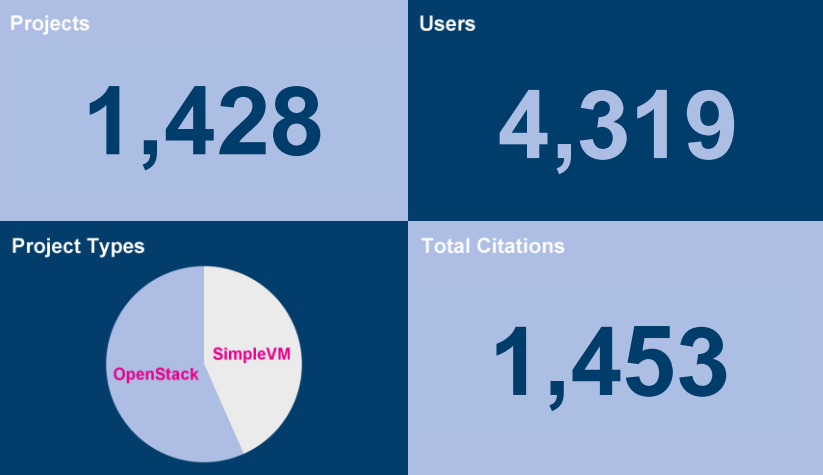
- ▶ Workshop module to define VMs using base images, virtual research environments, or snapshots
- ▶ Add participants with an existing Life Science AAI account to your project
- ▶ Send VM access details to each participant individually
- ▶ Launch VM instances for your participants



Cluster

- ▶ “One-click” solution for starting more complex cluster setups, e.g. for Nextflow
- ▶ Connect multiple machines to one SimpleVM Cluster
- ▶ Job scheduling mechanism (SLURM)
- ▶ Easy automatic scale-up and scale-down
- ▶ Currently in beta development, available on request

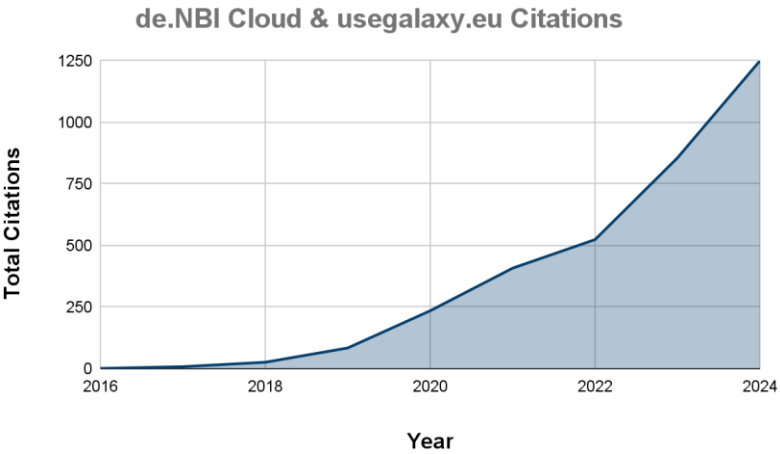
de.NBI Cloud in Numbers



> 1000's of users of our services:

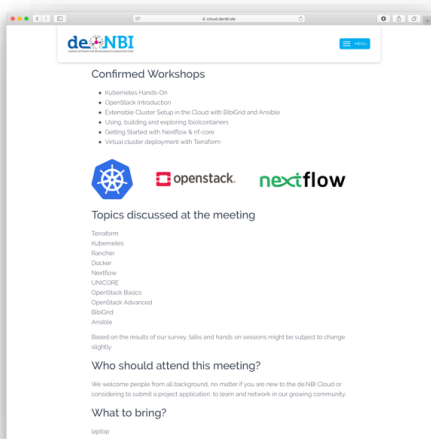
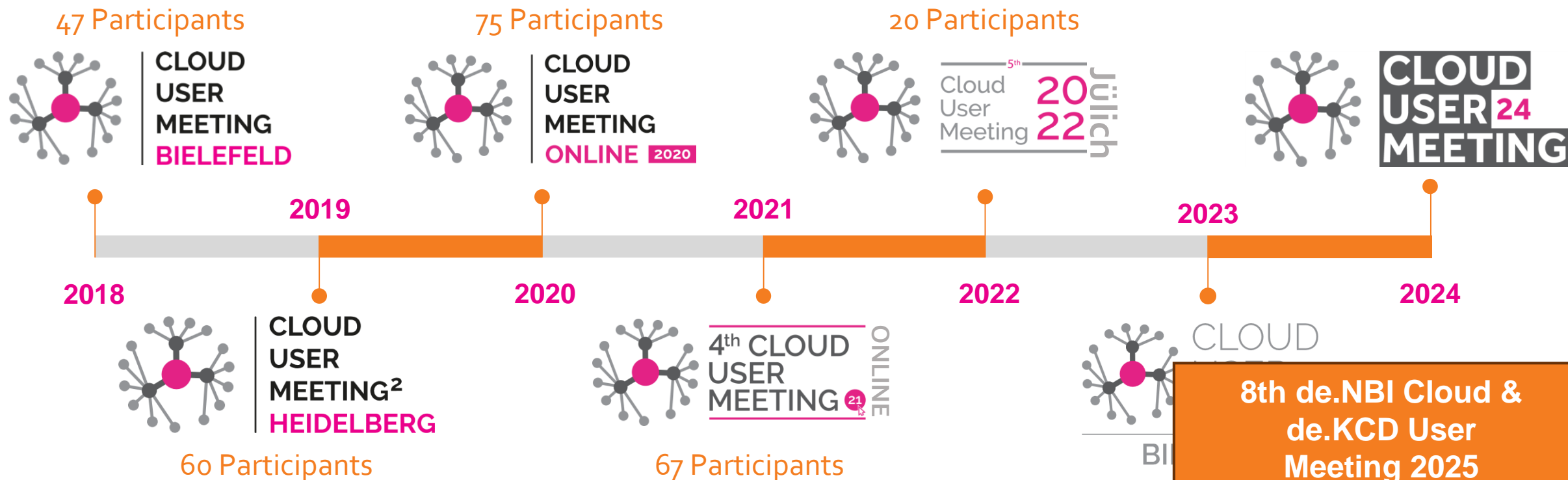


& many more



This work was supported by the de.NBI Cloud within the German Network for Bioinformatics Infrastructure (de.NBI) and ELIXIR-DE (Forschungszentrum Jülich and W-de.NBI-001, W-de.NBI-004, W-de.NBI-008, W-de.NBI-010, W-de.NBI-013, W-de.NBI-014, W-de.NBI-016, W-de.NBI-022).

Training and Community Building



Courses:

Beginners

- Introduction to VM basics: Linux, command line
- Using **SimpleVM** with Research Environments for applied bioinformatics use-cases

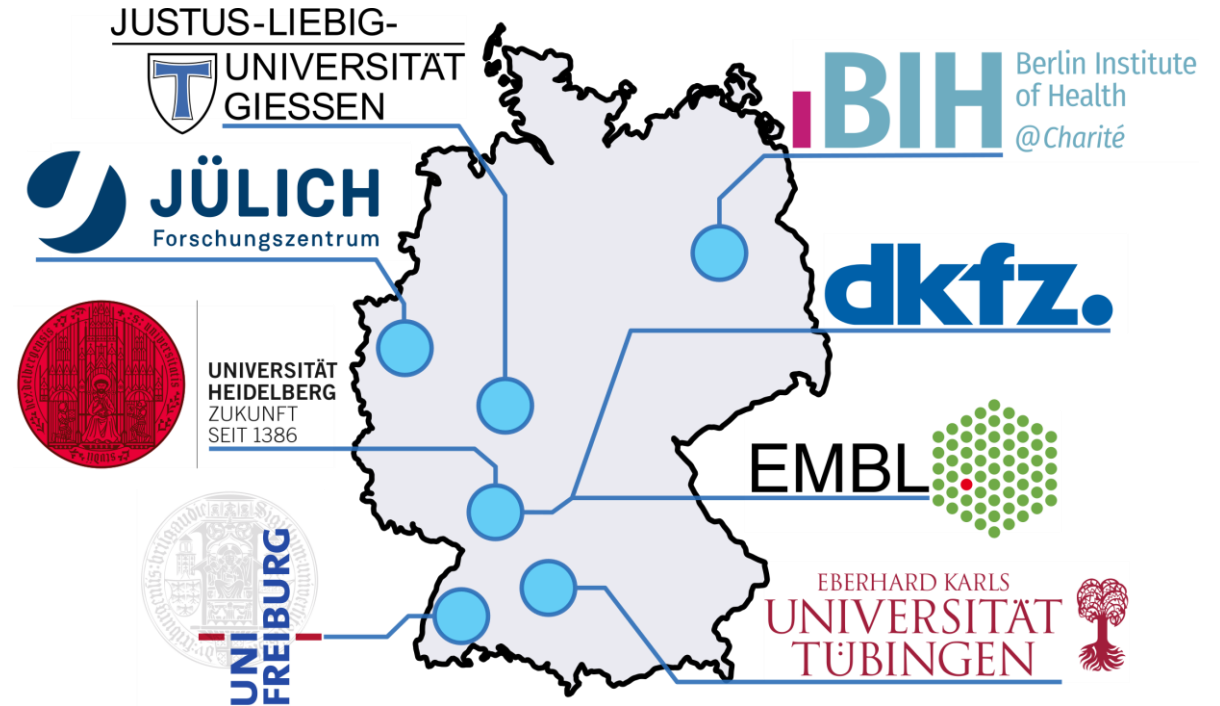
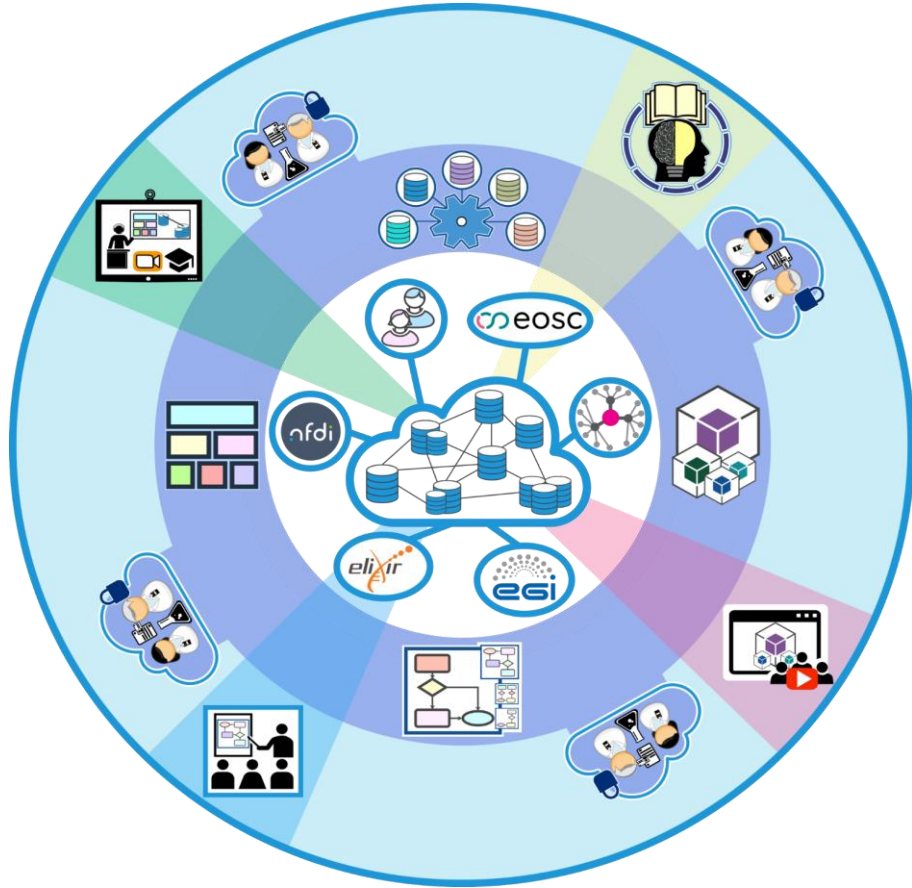
Intermediate

- Bioinformatics workflows: BioConda, BioContainers, CWL, Nextflow, Snakemake

Advanced

- IaaS / PaaS courses for: OpenStack, Kubernetes
- Infrastructure automation: Ansible, Terraform
- Grid computing in the cloud: BiBiGrid / SLURM

German Competence Center Cloud Technologies for Data Management and Processing



<https://datenkompetenz.cloud>

Collaboration with multiple RDM initiatives & NFDIs & other DCCs

Part of the Data competence centers for science, German Recovery and Resilience Plan (DARP) and BMBF's Research data action plan
Project Administration: VDI/VDE Innovation und Technik GmbH

SPONSORED BY THE



Federal Ministry
of Education
and Research

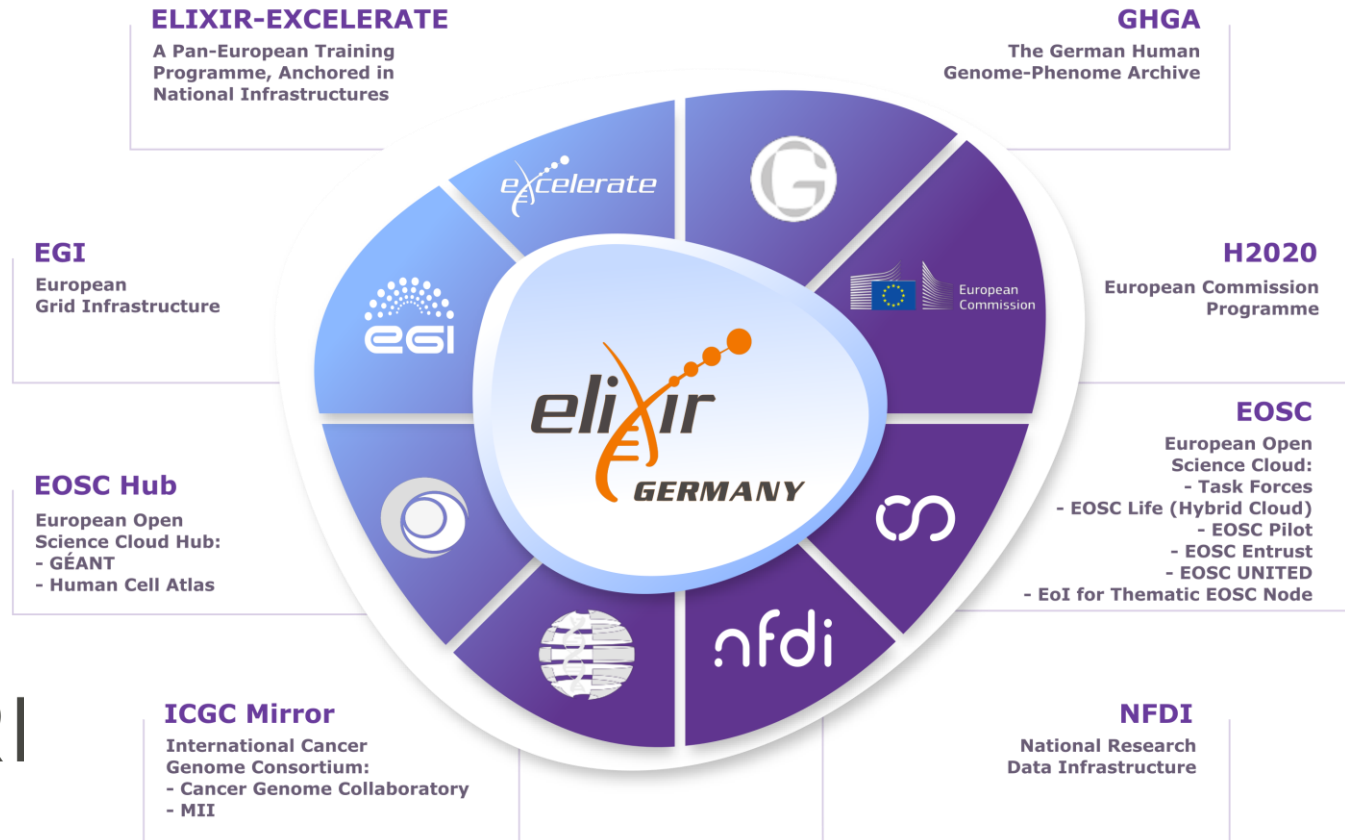


Finanziert von der
Europäischen Union
NextGenerationEU

de.NBI Cloud Collaborative Efforts and Engagement

The de.NBI Cloud engages in **national and international initiatives**, focusing on the following aspects:

- Developing, maintaining and providing a digital infrastructure that aligns with international standards
- **Technical possibilities and procedures** for pseudonymization and anonymization, as well as support for various models for potential data trusteeship solutions
- Hands-on training sessions to improve skills in data handling, cloud utilization and bioinformatics analysis



Processing of Sensitive Data @ de.NBI Cloud

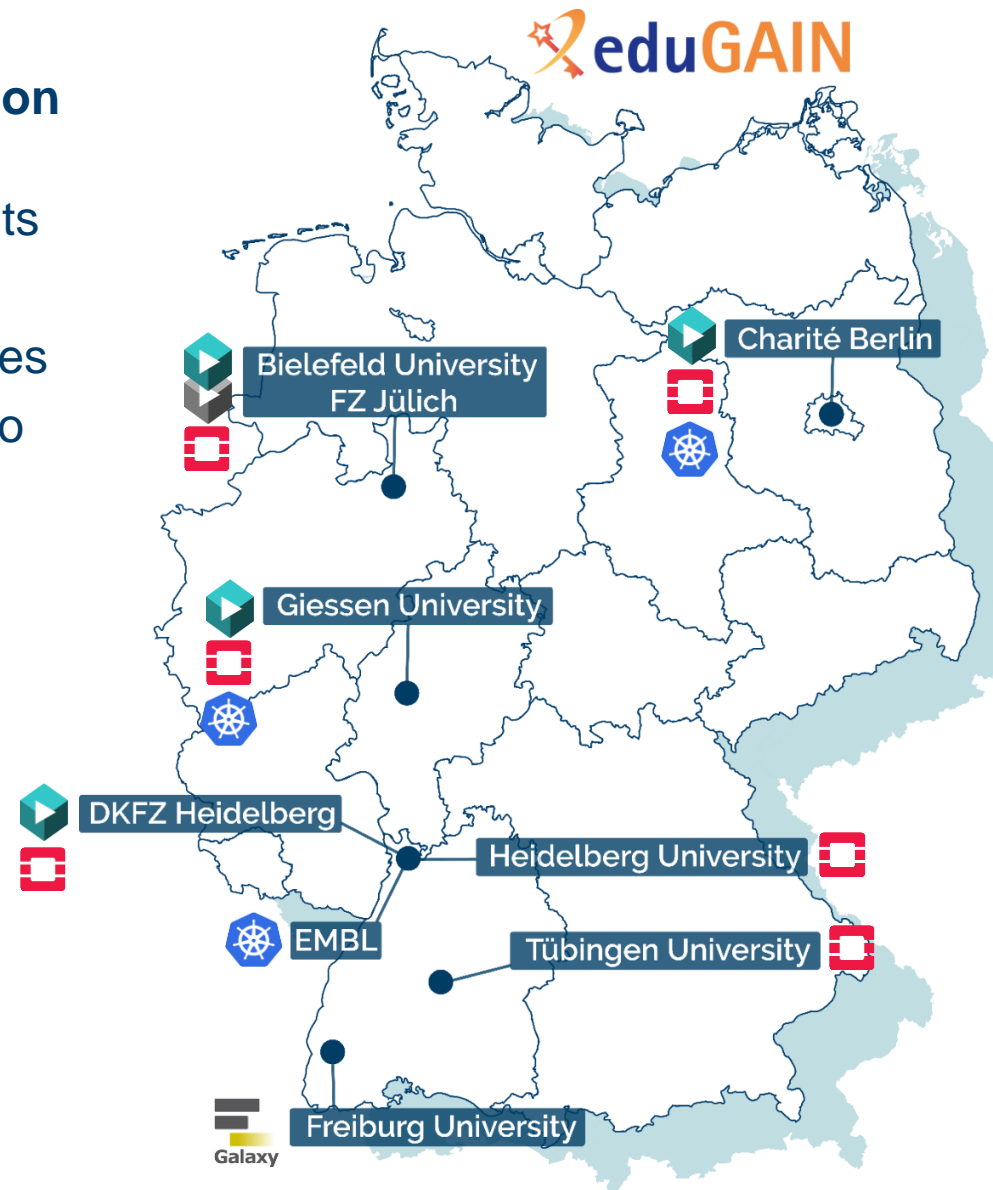
- ▶ DKFZ Heidelberg
- ▶ Charite Berlin
- ▶ Tübingen University
- ▶ FZJ / Bielefeld Univ.*

de.NBI Cloud

- ▶ Regular biosciences projects
- ▶ Projects processing
 - pseudonymized sensitive data with DP agreement
 - anonymized data

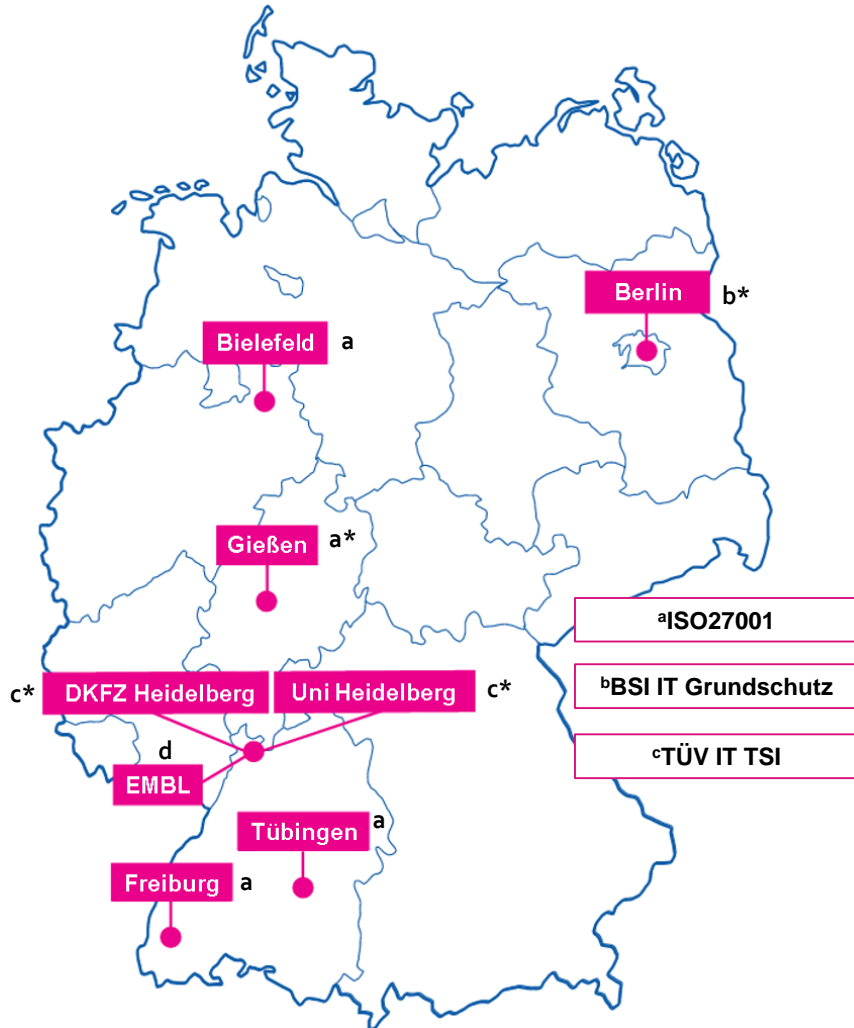
Sensitive Data Project Application Workflow

- ▶ Review of project requirements
- ▶ Assessment of data types
- ▶ Selection of suitable cloud sites
- ▶ Contact of cloud site with PI to discuss SOPs and data processing agreement
- ▶ Final allocation of project



* in development

de.NBI Cloud Federation - IT Security Certification



DIN EN ISO / IEC 27001 : 2017

Certified Information Security
Management System (ISMS)

Defines **technical and organisational**
measures and controls for risk
assessment and mitigation



- ▶ de.NBI Cloud @ Bielefeld University
- ▶ de.NBI Cloud @ Freiburg University
- ▶ de.NBI Cloud @ Tübingen University
- ▶ de.NBI Cloud @ Giessen University *

BSI IT - Grundschutz

Certified ISMS and Minimum
Required Implementation

Defines **mandatory** technical and
organisational measures and controls for
risk assessment and mitigation



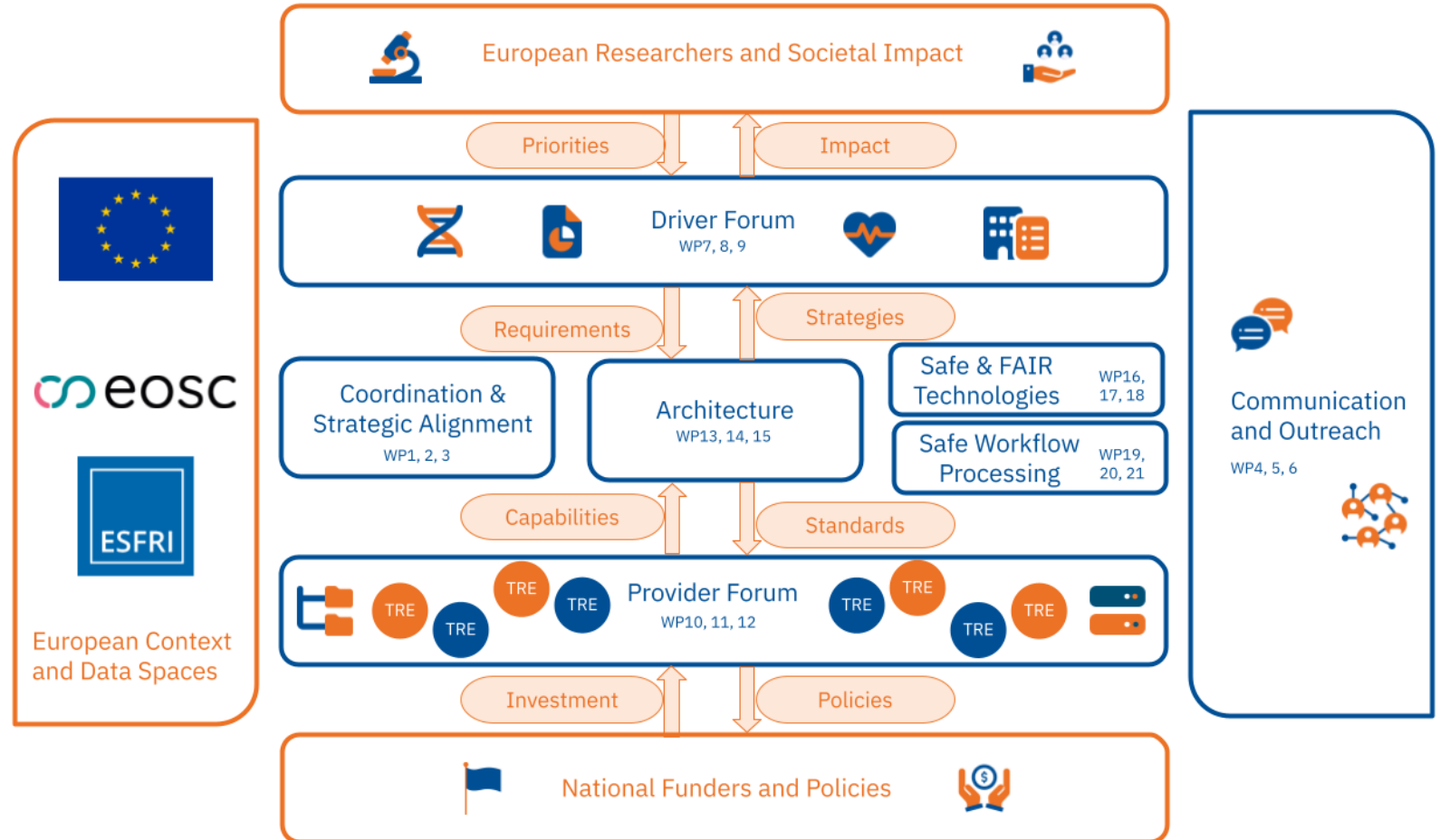
- ▶ BIH / Charite Berlin *
- ▶ DKFZ Heidelberg (TÜV IT Trusted Site
Infrastructure) *
- ▶ Heidelberg University (TÜV IT TSI) *

* preparation for certification ongoing

EOSC ENTRUST

2024 - 2026

- ▶ **Goal:**
Create a European network of TRUSTed research environments
- ▶ Create Blueprints, Best Practice Guidelines and Software Components for sensitive data processing
- ▶ 34 European Partners
- ▶ Multiple European Infrastructures: CESSDA, ECRIN, HDR UK, ELIXIR, EUDAT
- ▶ **de.NBI Cloud / ELIXIR-DE part of TRE Provider Forum (WP 10, 11, 12)**



Acknowledgements



Bielefeld University

Jens Stoye
Volker Tölle
Stefan Albaum
Björn Fischer



DKFZ

Ivo Buchhalter
Martin Lang
Philip Kensche
Jordi Pujol
Bastian Beyer



UNIVERSITÄT
HEIDELBERG
ZUKUNFT
SEIT 1386

Heidelberg University

Rob Russel
Nick Kepper
Max Sieckmeyer

EMBL



EMBL

Peer Bork
Jan Korbel
Tobias Rausch
Alex Kelleher



Berlin Institute of Health

Roland Eils
Jürgen Eils
Martin Braun
Stefan Schneider
Valentin Schneider-Lunitz
Sven Twardziok
Harald Wagener



FZ Jülich @ Bielefeld

Peter Belmann
Christian Henke
Nils Hoffmann
Jan Krüger
Qiqi Mok
Grace Florensia
Viktor Rudko
Alexander Sczyrba
Alex Walender
David Weinholz



Gießen University

Alexander Goesmann
Burkhard Linke
Marius Dieckmann
Frank Förster
Sebasitan Beyvers



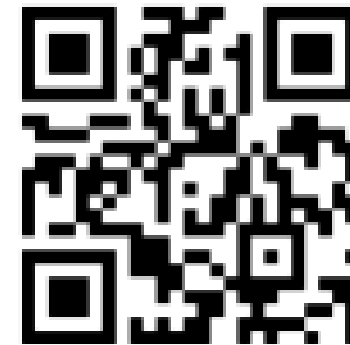
Freiburg University

Rolf Backofen
Björn Grüning
Jan Leendertse
Marc Herbstritt



Tübingen University

Oliver Kohlbacher
Jens Krüger
Johannes Werner
Mohamad Chehab
Fabian Wannenmacher
Amir Baleghi
Fabian Paz



<https://cloud.denbi.de>

